



Central European Joint Infodays 2025

Training seminar focusing on the Erasmus+ centralised actions in higher education and cooperation with partner countries

1-2 December 2025



Erasmus Mundus Joint Masters

In-depth workshop

Bettina Ugrósdý-Beregi

Tempus Public Foundation
Hungary

Judit Saád

Eötvös Loránd University
Hungary



Aims and objectives

- Keywords: excellence and jointness
- More competitive European higher education sector
- Boost international academic cooperation of HEIs
- Provide mobility opportunities to the most talented students
- Develop curricula tailored to the needs of society and labour market
- Deliver a high-level integrated transnational study programme at master level – *needs analysis* + [course catalogue](#)

Why?

Student level

- Excellent academic education
- High quality degree
- Improve competences and skills
- High employability



Institutional level

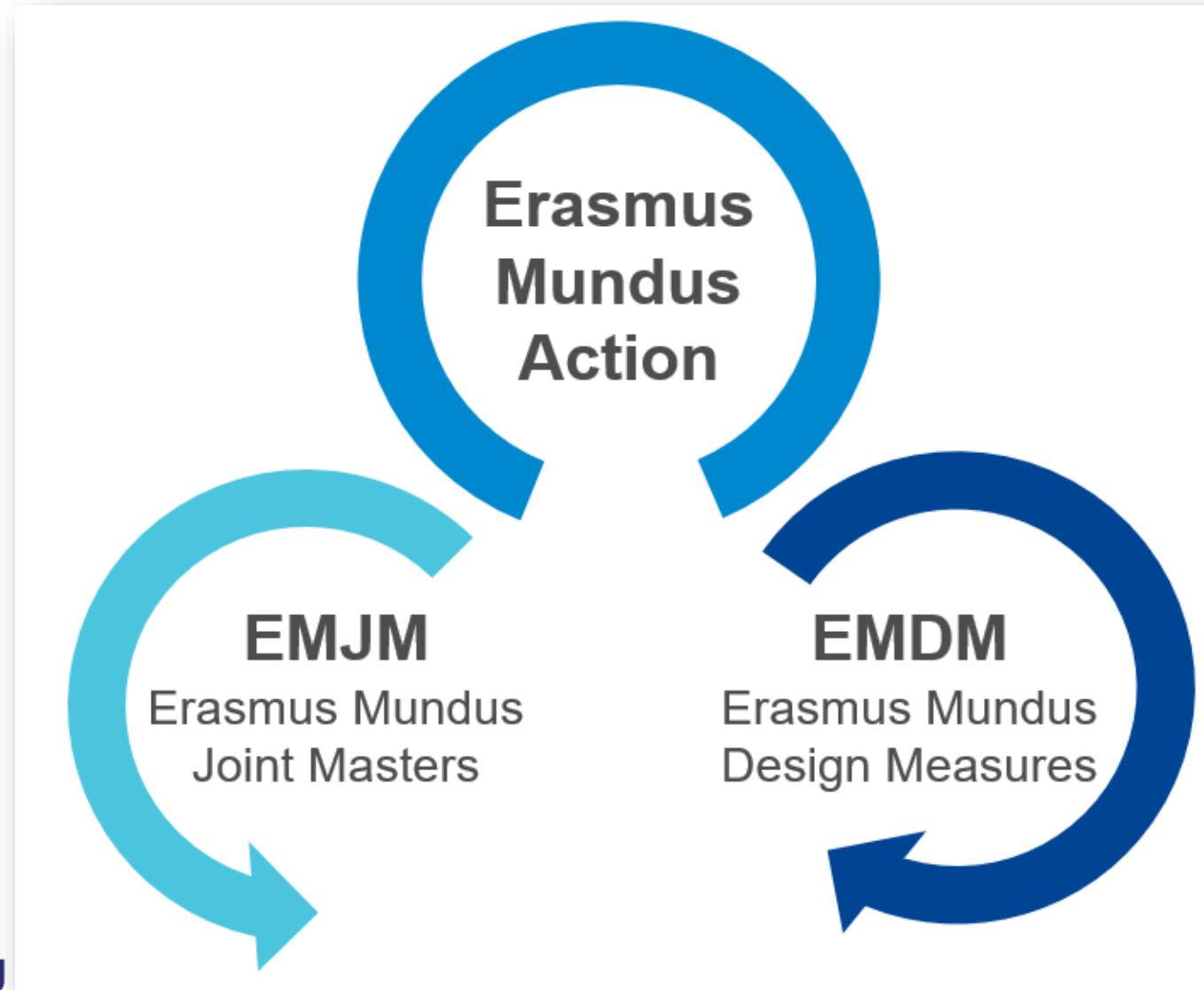
- Excellence programme
- Support deep quality institutional cooperation
- High visibility on international level
- Selection of the most talented students worldwide

Policy level

- Increase the quality and attractiveness of EHEA
- Increase synergies between education, research and innovation
- More competitive European Higher education
- Attract talent to Europe
- Respond to labour market needs



Erasmus Mundus over 20 years



Master in Research and Innovation in Higher Education

Established in 2012 (**Third round of successful application** – MARIHE 3.0 launched this year)

Identified needs: challenges that HE faces all over the world (digital transformation, internationalization, sustainability, and social responsibility -> traditional approaches are no longer sufficient)

Objectives:

- To develop leaders who will transform higher education worldwide

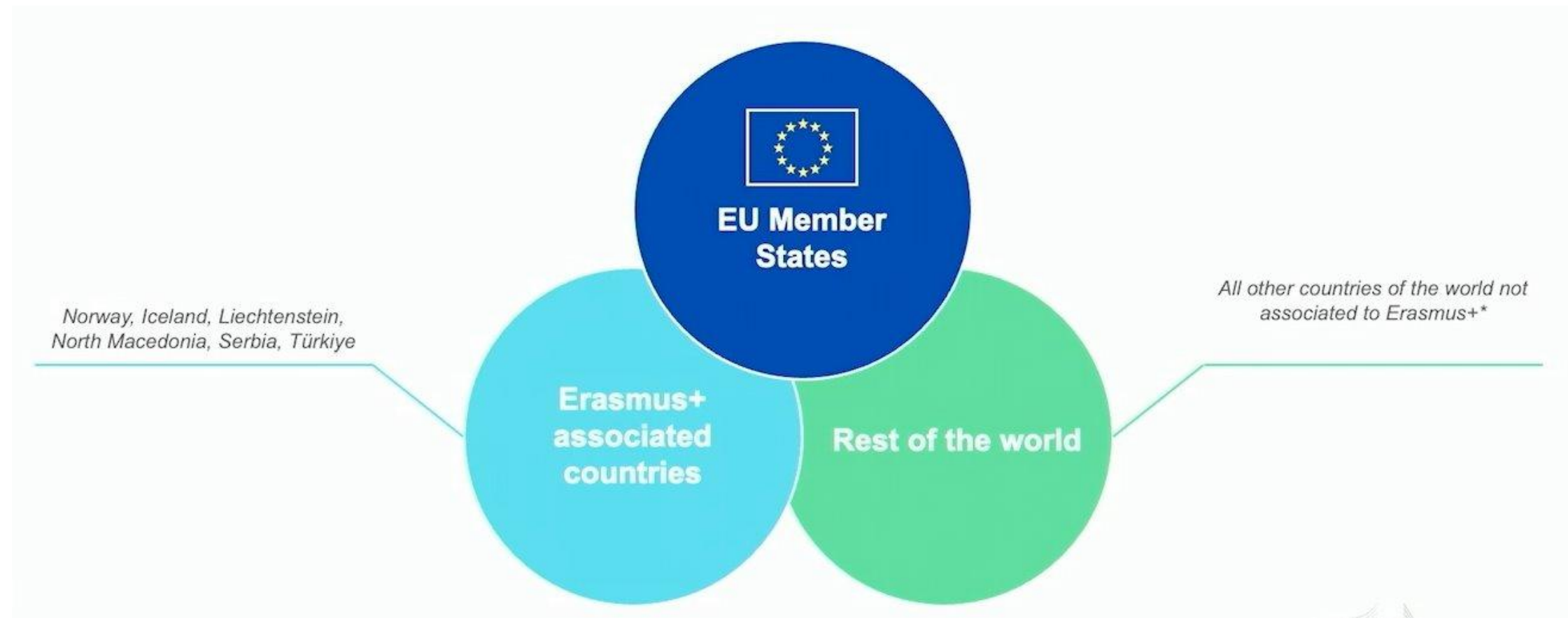
The program offers:

- an unparalleled opportunity to gain expertise in research, innovation, and strategic leadership
- the program combines global educational excellence with multicultural perspectives, preparing professionals to lead institutional change and influence policy at the highest levels

Target group:

- education professionals ready to advance their careers and make lasting impact

Consortium member countries



Consortium – partner types

Eligibility criteria for **Coordinator**

- legal entity or
- HEI
 - EU: ECHE needed
 - 3rd country associated: ECHE needed
 - 3rd country not associated (not necessary to include)

Eligibility criteria for full **Partners**

- Legal entity or
- HEI (same applies as for Coordinator)
- Organisations or associations relevant to the delivery of EMJM

Associated partners

- optional

Minimum 3 HEIs from 3 different countries (at least 2 from EU or 3rd countries associated to the Programme)



(average 24 participating organisations including associated partners)

European partners

- University for Continuing Education Krems, Austria (UWK)
- Tampere University, Finland (TAU)
- Osnabrück University of Applied Sciences, Germany (UASO)
- Eötvös Loránd University, Hungary (ELTE)
- University of Aveiro, Portugal (UA)

Asian partners

- Beijing Normal University, China (BNU)
- Thapar Institute of Engineering and Technology (TIET)
- Associated Partners (13)

Consortium Board: Coordinator +Partners: Academic Directors

- Academic issues, programme development and promotion, quality management, budget decisions, administrative issues (eg. student selection and admission, student experience, mobility, graduation)

- Each consortium members has equal votes (one vote)

Budget: via Coordinator (more details later)

Special tasks:

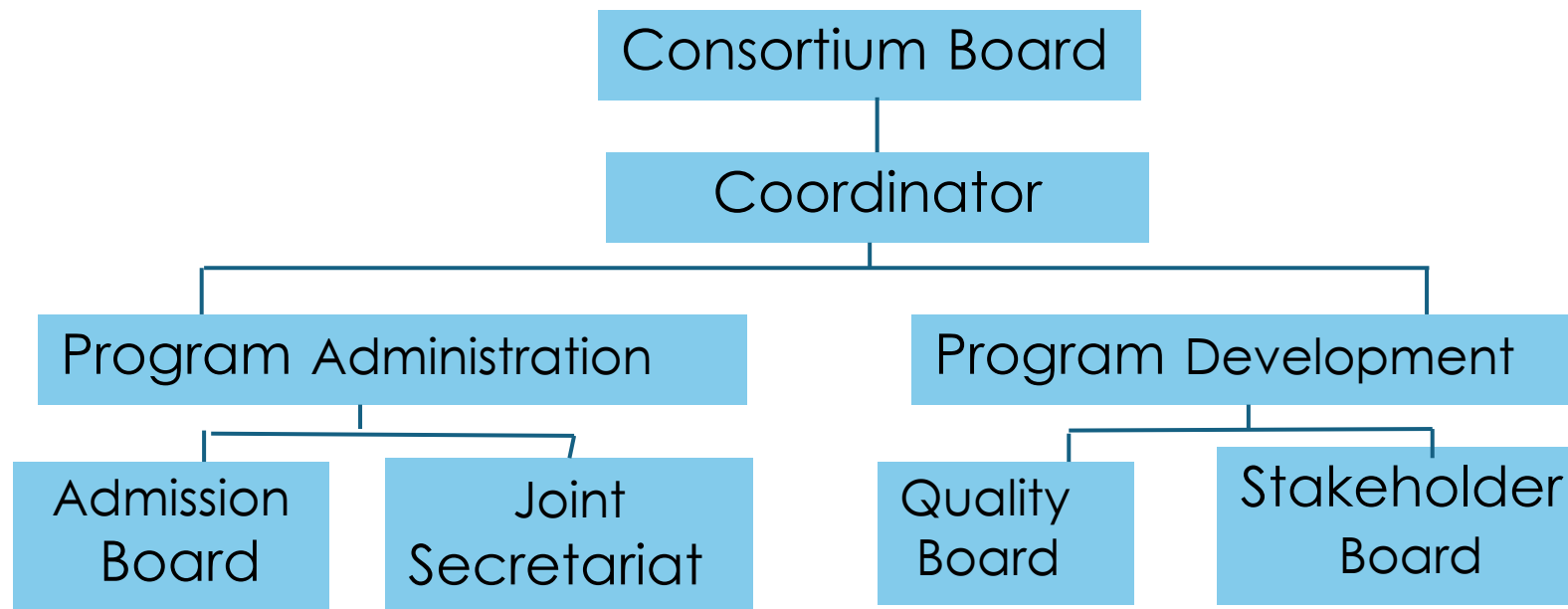
- TAU: internship scheme
- BNU: programme evaluation
- ELTE: curriculum revision
- UASO: promotion

Obligations of all individual partners:

- Organise study periods
- Nominate programme manager in charge of administrative issues
- Implement joint quality assurance system in their own institute
- Engage visiting scholars

Associated Partners

- Renowned national or international institutions
- Provide places for the compulsory internship for students and support the academic board of MARIHE with their expertise
- Participate in the programme as faculty
- Promotion of the programme



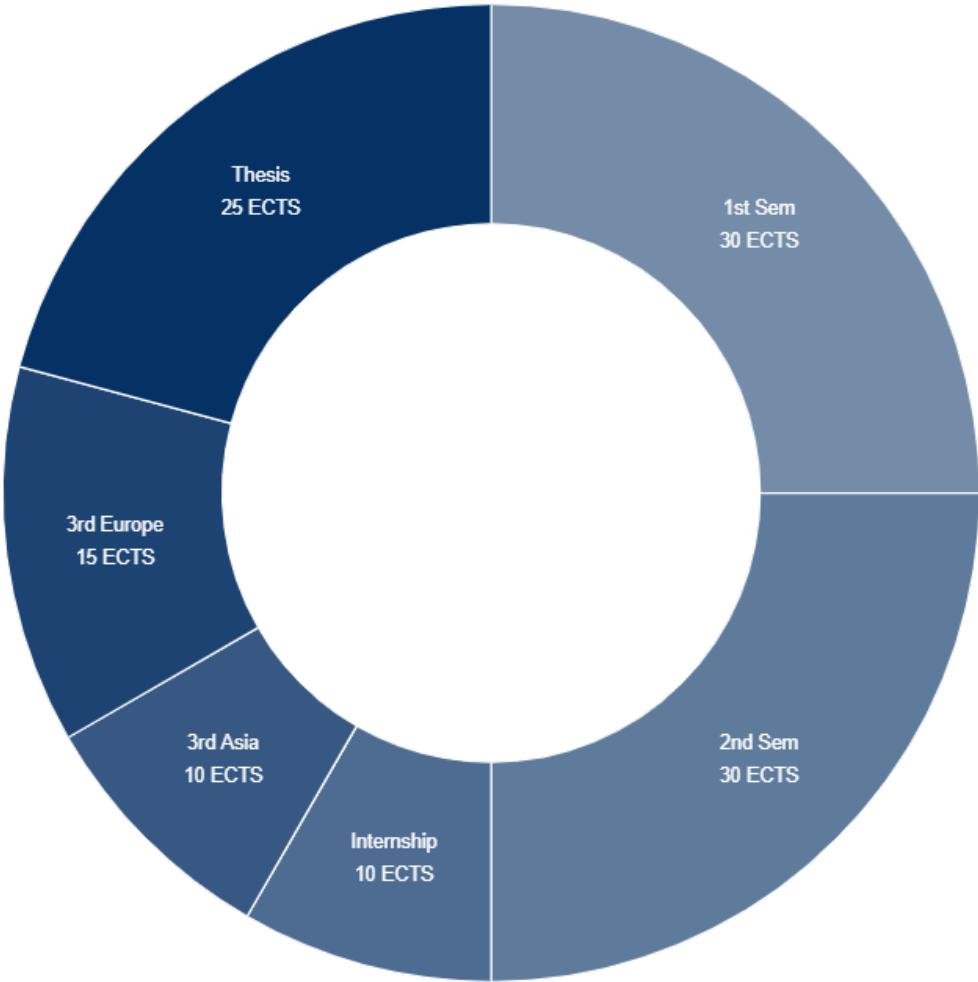
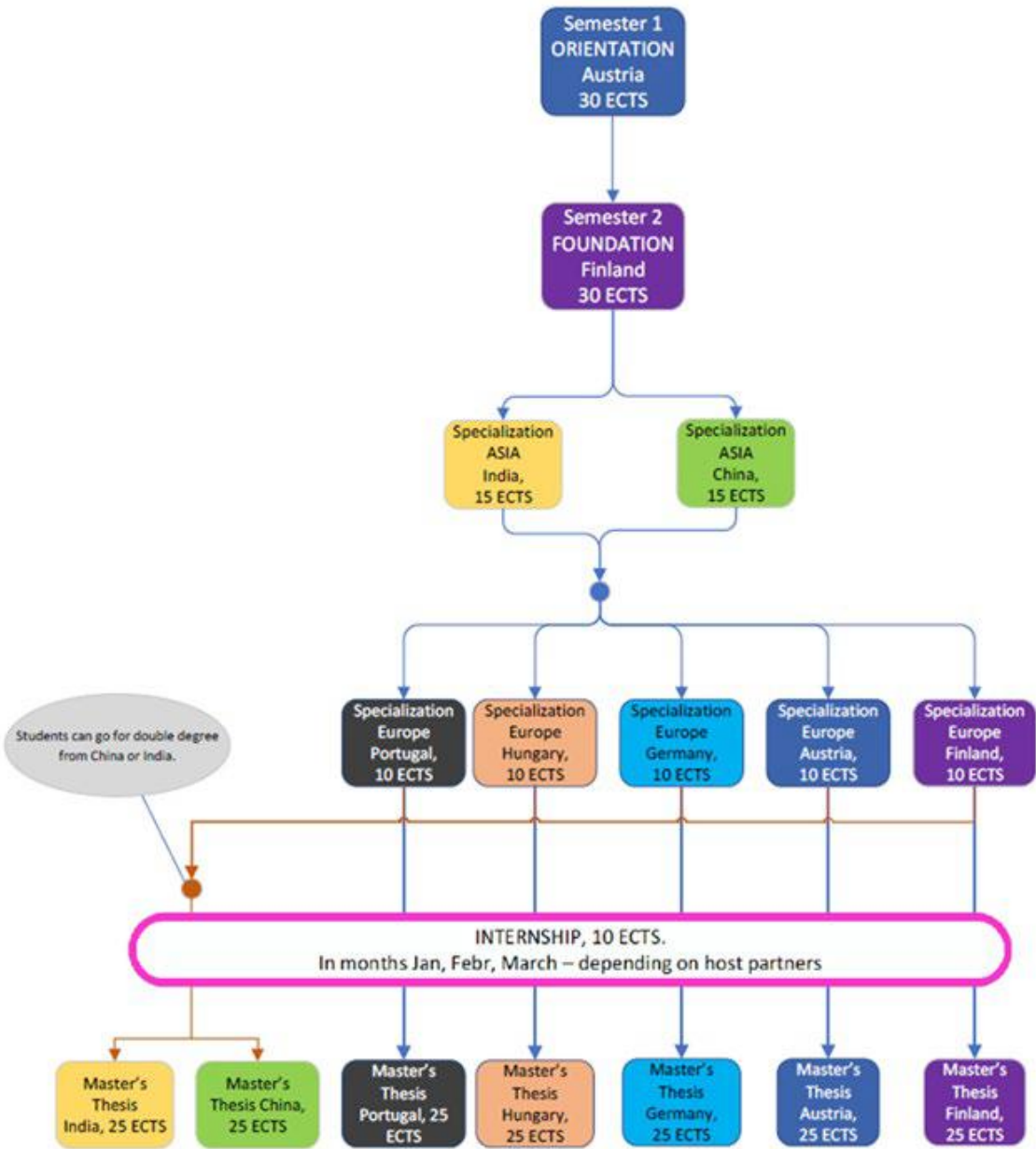
MARIHE is listed as a good practice in governing joint Programmes in the Guide to Joint programmes from A to Z by Erasmus Mundus

Requirements for the master programme



- Minimum 4 editions of the master programme, each lasting 1-2 academic years (60/90/120 ECTS)
- Start of the 1st edition max. the academic year after project selection
- Commitment to enrol a certain number of students per project
- Min. 2 study periods in 2 foreign countries (min. 1 programme country)
- Geographical balance of students: max.10% of total scholarships for students of the same nationality

Curriculum overview



Degree schemes

Specialization	Type of Degree	Awarding Inst	Awarded Degree
Institutional Research	Joint	TAU + UWK	Master of Administrative Sciences
Research Management and Digital Transformation	Joint	TAU + UWK	Master of Administrative Sciences
Leadership and Management	Joint	UASO + UWK	Master of Science
Learning and Teaching	Joint	ELTE + UWK	Master of Science
Sustainability Education and Social Entrepreneurship	Double	TIET, UWK	TIET: Master of Arts, Sustainability Education; UWK: Master of Science
Educational Planning and Development	Double	BNU, UWK	BNU: Master of Arts in Education; UWK: Master of Science
Policy Analysis	Multiple	UA, UWK, TAU	UA: Master in Administration and Public Policies; UWK: Master of Science; TAU: Master of Administrative Sciences

Accreditation

At application stage full partner HEIs must demonstrate to have fulfilled the external Quality Assurance (QA) requirements of their jurisdiction for the joint programme.

This can result either:

- (i) from having successfully implemented the European Approach for Quality Assurance of Joint Programmes (if national legislation allows),
- (ii) or be based on a specific accreditation/evaluation of the joint programme,
- (iii) or of each national component
on the basis of which the EMJM is composed.

Accreditation

At the start: Individual accreditations by partners

- some partners: newly accredited program
- other partners: under existing programs
- ELTE:
 - 2nd round: under existing program → credit equivalence table, credit transfer in each semesters (double degree scheme)
 - 3rd round (joint degree scheme): no need for accreditation (already accredited)
 - **regularly monitored** by EQAR-registered agencies
 - external programme accreditation: D, HU, P
 - external institutional audits : AT, F
 - QA standards and procedures defined by the ESG and the European Approach for QA of Joint Programmes

How to start – technical info

- Read carefully the Programme Guide
- Plan your project ahead
- Visit [FTOP](#)
- EU Login Account
- PIC code

Start submission

 Need help?

To access the Electronic Submission Service, please click on the submission-button next to the **type of action** and the **type of model grant agreement** that corresponds to your proposal. You will then be asked to confirm your choice, as it cannot be changed in the submission system. Upon confirmation, you will be linked to the correct entry point.

To access existing draft proposals for this topic, please login to the Funding & Tenders Portal and select the My Proposals page of the My Area section.

Please select the type of your submission:

☒ ERASMUS EMJM Unit Grants [ERASMUS-EMJM-UN], ERASMUS Unit Grant [ERASMUS-AG-UN]

Start submission

About the application

The application form is structured in 3 parts:

- **Part A - Administrative Forms (online at the portal)**
General info about the project, data on applicant organisation & contact persons
- **Part B – Technical description & annexes (to be uploaded)**
Narrative part of the project, work packages, milestones & deliverables
- **Part C – Administrative forms (online at the portal)**
Specificities (number of ECTS, accreditation, type of degrees to be awarded, etc.)

About the application

Call: **ERASMUS-EDU-2026-PEX-EMJM-MOB**

Topic: **ERASMUS-EDU-2026-PEX-EMJM-MOB**

Type of action: **ERASMUS-EMJM-UN**

Type of MGA: **ERASMUS-AG-UN**



Topic and type of action can only be changed by creating a new proposal.

Proposal data

Acronym: **Test2026**

Draft ID: **SEP-211266709**

Download Part B templates



[Download part B templates](#)

Support & Helpdesk



[Online Manual](#)



[IT How To](#)



[IT Helpdesk](#)



[FAQ](#)

Service Desk:



EC-FUNDING-TENDER-SERVICE-DESK@ec.europa.eu



Your proposal contains changes that have not yet been submitted.

Administrative forms (Part A)

[Edit forms](#)



[Edit Part C \(KPI\)](#)

[View history](#)

[Print preview](#)



Part B and Annexes

In this section you may upload the technical annex of the proposal (in PDF format only) and any other requested attachments.

Part B of proposal *

Detailed budget table *

Draft Partnership Agreement *

Proof of accreditation *

Blank copies of the proposed
master degree diplomas

Draft model of Diploma
Supplement

Draft Student Agreement

List of previous projects

Part A

- General information: acronym, summary, duration, etc
- Partners and contacts (set roles)
- Budget (calculator)

Part A - Administrative forms

- Use the icon 'Edit forms' to access the administrative forms.

Administrative forms (Part A)

Edit forms



Edit Part C (KPI)

View history

Print preview

- Here you can edit the following data.

Section	Title	Action
1	General information	Show
2	Participants	Show
3	Budget	Show
4	Other questions	Show

- Use the navigation bar to move between the 3 Sections. To exit this section click on 'Save & exit form'.

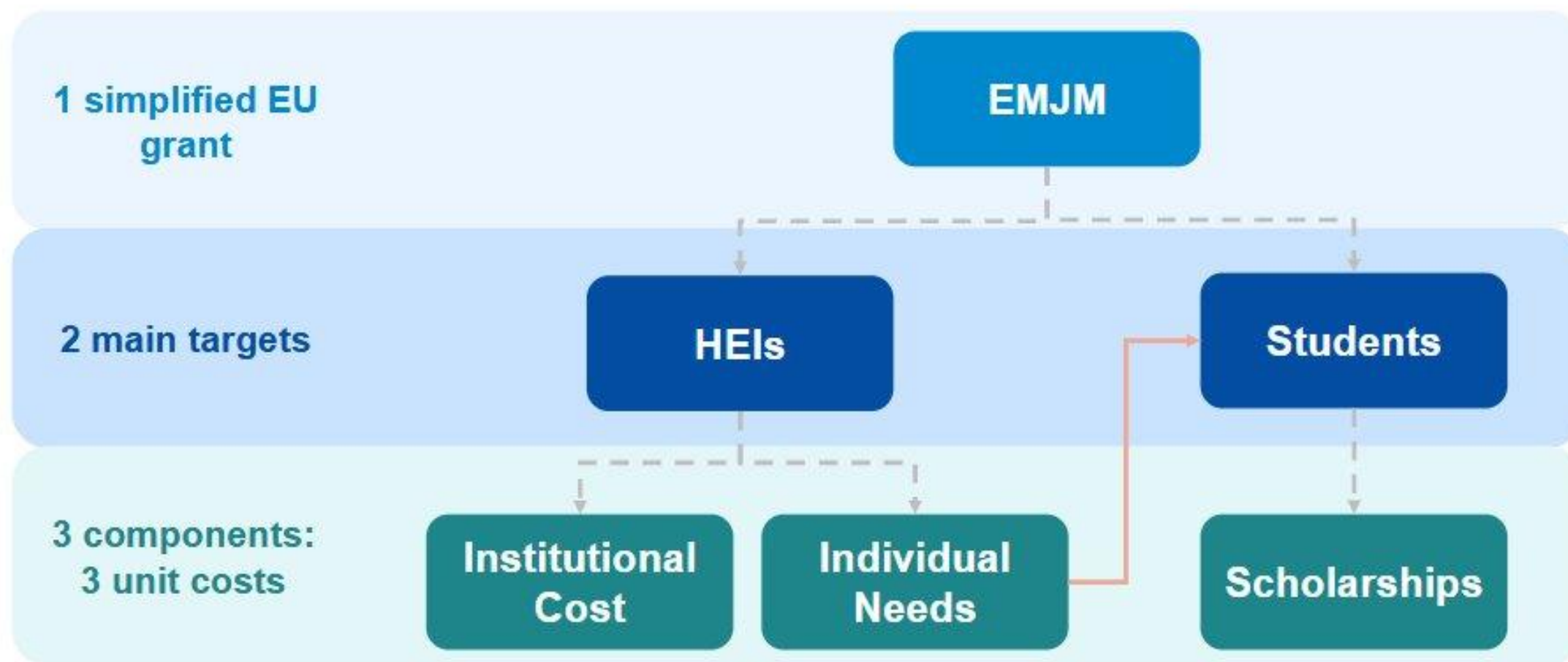
Table of contents

Validate form

Save form

Save & exit form

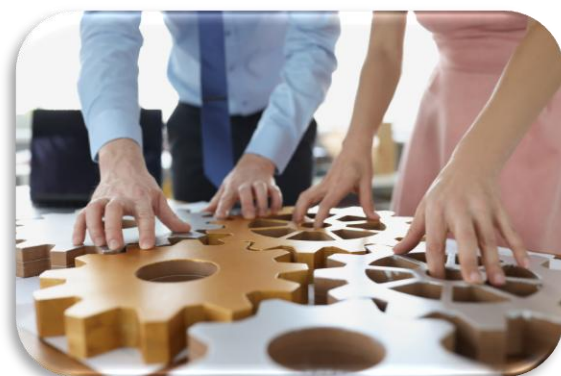
EU grant contribution



Funds available

Institutional costs:
750 € monthly per student

Cap: 100 students
Max: 1 800 000 €



Scholarships:
1400 € monthly per student

Cap: 50 + 20 students
Max: ~ 2 700 000 €



Special needs top up:
Unit costs ranging between
3 000 € - 60 000 €

Max: 120 000 €



Estimated number of students (for the entire duration of the EMJM)

Duration of the master programme in months (12, 18, 24), corresponding to 60, 90, 120 ECTS respectively

24

Please enter data only in cells highlighted in blue

Number of non-scholarship holders

Number of scholarship holders*

Ok

Total enrolled students

Number of special needs units (0 to 2) for all enrolled students

Heading 2 EU Member States and Third Countries associated to the programme		Heading 2 Third Countries not associated to the programme		Heading 6 Third Countries not associated to the programme IPA		Heading 6 Third Countries not associated to the programme NDICI		Total	
Nr. students	Person/months	Nr. students	Person/months	Nr. students	Person/months	Nr. students	Person/months	Nr. enrolled students	Person/months
12	288	11	264	N/A		N/A		23	552
23	552	27	648	2	48	18	432	70	1 680
35	840	38	912	2	48	18	432		
								2	

*Sum of Heading 2 must be inferior or equal to	50
*Sum of Heading 6 must be inferior or equal to	20
For IPA Heading 6 must be inferior or equal to	2
For NDICI Heading 6 must be inferior or equal to	18

Calculation of max. GRANT amount

VALIDATION

Ok

Unit costs	Heading 2		Heading 6 IPA		Heading 6 NDICI		Maximum GRANT amount
	Total GRANT	Total Person/months	Total GRANT	Total Person/months	Total GRANT	Total Person/months	

A. Contribution for scholarships	1 400	1 680 000	1 200	67 200	48	604 800	432	2 352 000
B. Institutional contribution **	750	1 314 000	1 752	36 000		324 000		1 674 000
C. Contribution for special needs	60 000	120 000	NA					120 000
TOTAL		3 114 000		103 200		928 800		4 146 000

** the Heading 2 sum will be computed based on the sum of E9 and G9 with a maximum corresponding to 100 enrolled students

Application: Part B

Sections 1, 2 & 3

Award Criteria

Section 4

Workplan, Work Packages & Timing

Section 5

N/A

Section 6

Declarations concerning double funding

Application – Part B

Section 1: Award criteria relevance

Relevance (30 pts)

- Objectives
- Rationale
- Curriculum design
- EU values, innovation

Min. 22 pts

Quality (30+20 pts)

- Organisation of programme
- Student application, selection, services
- Inclusion
- Monitoring strategy
- Cost-effectiveness
- Project team, organisational structure

Min. (project design: 15 +
partnership: 10 pts)

Impact (20 pts)

- Impact at different levels
- Communication and dissemination
- Sustainability

Min. 10 pts



Threshold at 70 points

Relevance and quality

- Truly **interdisciplinary**
- Highly **transdisciplinary** (13 Associated partners)
- **Global perspective** on higher education, research and innovation
- **Individualised** study paths
- Diverse and innovative **modes of delivery and pedagogical methods**
- **Diverse specialisation** opportunities
- **Wide range of services** for students (well-being, inclusivity, employability, networking, etc.)
- **Super mobility**
- Strong **student community** and **alumni**

Impact

Key Impact Indicator (baseline vs. Target)

- Employment rate 6 months after graduation
- Graduates professionally engaged in topics covered by MARIHE
- Satisfaction rate* among graduates with the programme's career building activities
- Satisfaction rate* of employers with graduates' skills
- Number of students countries of origin

*Likert Scale 1–5

FACTS

- 90% remain professionally engaged with higher education topics covered in MARIHE
- 75% of graduates secure employment within six month
- 70% report significant career advancement
- 20% pursue PhD programs at prestigious institutions
- Strong alumni network
- Regular alumni events and professional development
- Global reach enables cross-cultural partnerships

Application – Part B

Section 4: Workplan, work packages

Work-Package-1: [Name, e.g. Management and implementation of the Master programme]							
Duration:	MX--MX	Lead-Beneficiary:			1-Short-name		
Objectives							
List the specific objectives to which this work package is linked.							
■ →							
Activities and division of work (WP description)							
Task-No	Task-Name	Description	Participants		In-kind Contributions and Subcontracting (Yes/No and which)		
			Name	Role			
T1.1					n/a		
T1.2					n/a		
Milestones and deliverables (outputs/outcomes)							
Milestone-No (continuous numbering not linked to WP)	Milestone-Name	Work-Package-No	Lead-Beneficiary	Description	Due-Date (month-number)	Means of Verification	
MS1		1					
MS2		1					
Deliverable-No (continuous numbering linked to WP)	Deliverable-Name	Work-Package-No	Lead-Beneficiary	Type	Dissemination-Level	Due-Date (month-number)	Description (including format and language)
D1.1		1					

Work packages

WP1 Management and implementation of the Master programme

- Set up governance structure
- Project management and consortium coordination
- Project monitoring and evaluation
- Curriculum implementation
- Promotion of the master programme and its impact
- Sustainability and dissemination of results

WP2 Selection and supervision of students

- Student lifecycle of edition 1
- Student lifecycle of edition 2
- Student lifecycle of edition 3
- Student lifecycle of edition 4

Application – Part B and annexes

Part B and Annexes

In this section you may upload the technical annex of the proposal (in PDF format only) and any other requested attachments. ⓘ

Part B of proposal *	<input type="text"/>	ⓘ	Upload 
Detailed budget table *	<input type="text"/>	ⓘ	Upload 
Proof of accreditation *	<input type="text"/>	ⓘ	Upload 
Draft Partnership Agreement *	<input type="text"/>	ⓘ	Upload 
Draft model of Diploma Supplement	<input type="text"/>	ⓘ	Upload 
Draft Student Agreement	<input type="text"/>	ⓘ	Upload 
Blank copies of the proposed master degree diplomas	<input type="text"/>	ⓘ	Upload 
Other annexes	<input type="text"/>	ⓘ	Upload 

Mandatory documents

- Part B
- Calculator (budget table)
- Proof of accreditation
- Draft Partnership Agreement

Optional annexes

- Draft model Diploma Supplement
- Draft Student Agreement
- Copies of the proposed degree
- Other annexes

Annexes

Standard

- **Detailed budget table**/Calculator (annex 1 to Part B) — *mandatory for Unit Grants (see Portal Reference Documents)*
- CVs (annex 2 to Part B) — *not applicable*
- Annual activity reports (annex 3 to Part B) — *not applicable*
- **List of previous projects** (annex 4 to Part B) — *mandatory*
- Special
- **Proof of accreditation** — *mandatory*
- **Draft Partnership Agreement** — *mandatory*
- **Draft model of Diploma Supplement** — *optional*
- **Blank copies of the proposed master degree diplomas** — *optional*
- **MARIHE Curriculum 2024**
- **Letters of Intent of Associated Partners**
- **Draft Student Agreement** — *optional*

Part C (online)

Key Performance Indicators:

- Type of project
- Priorities
- Policy impact
- Number of persons reached, new partnerships
- Etc.



Deadline

Erasmus Mundus Joint Masters

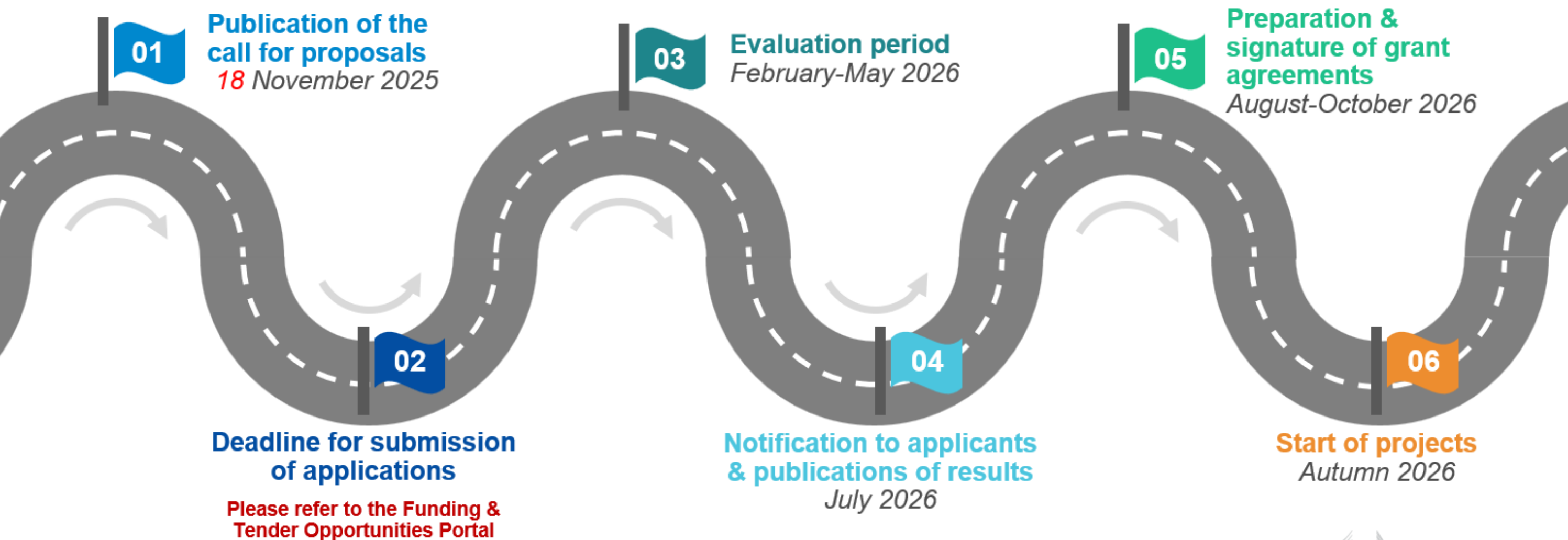
ERASMUS-EDU-2026-PEX-EMJM-MOB

Deadline: 12 February 2026 17:00:00 Brussels time

Submit 48 hours before the deadline

You can submit the proposal as many times as you wish up until the deadline. Each new submitted version will replace the previous one.





INFODAYS.EU



MARIHE ALUMNI

- **Community Building:** Establish and nurture a strong sense of belonging among alumni worldwide.
- **Career Development & Networking:** Support alumni in their professional journeys through job sharing and networking opportunities.
- **Knowledge Sharing & Collaboration:** Create platforms for alumni to exchange ideas, experiences, and collaborate on projects related to higher education.
- **Program Support & Engagement:** Involve alumni in enriching the MARIHE program through guest lectures, feedback, and mentoring.

Thank you for your attention!

Ronay.zoltan@ppk.elte.hu Academic Director, responsible for the programme

kalman.orsolya@ppk.elte.hu Academic Director, responsible for the ELTE specialisation

saad.judit@ppk.elte.hu Program coordinator



More info

- ✓ [20 years of Erasmus Mundus - Beyond borders and boundaries](#) and [20 years of Erasmus Mundus \(key figures\)](#)
- ✓ [Erasmus Mundus 20th anniversary conference “Beyond borders and boundaries” - Conference report, 27-28 May 2024, Brussels](#)
- ✓ [Erasmus Mundus, analysis of the results of the second 2021-2027 call \(joint masters and design measures\)](#)
- ✓ [Erasmus Mundus, analysis of the results of the first 2021-2027 call \(joint masters and design measures\)](#)
- ✓ [Statistical factsheets on the achievements of the Erasmus Mundus Joint Master Degrees \(2014-2020\)](#)
- ✓ [Erasmus+ Factsheets](#)
- ✓ [Report 'Implementing Joint Degrees in the Erasmus Mundus action of the Erasmus+ programme'](#)
- ✓ [Erasmus Mundus Catalogue \(europa.eu\)](#)
- ✓ [Erasmus Mundus Joint Master Degrees - The story so far](#)
- ✓ [Sustainability of Erasmus Mundus Master Courses - Best practice guide](#)
- ✓ [Erasmus+ Project result platform](#)



EACEA-EPLUS-ERASMUS-MUNDUS@ec.europa.eu

Programme Guide
2026

